

# Biotinylated Human HGF R/c-MET Protein

Cat. No. MET-HM401B

## Description

<b>Source</b>	Recombinant Biotinylated Human HGF R/c-MET Protein is expressed from HEK293 with His tag and Avi tag at the C-Terminus. It contains Glu25-Thr932.
<b>Accession</b>	P08581-1
<b>Molecular Weight</b>	The mature form of HGF R is a heterodimer which can be cleaved into $\alpha$ and $\beta$ chain. The protein has a predicted MW of 32.5 kDa ( $\alpha$ chain) and 72.1 kDa ( $\beta$ chain). Due to glycosylation, the protein migrates to 45-50 kDa and 80-90 kDa based on Bis-Tris PAGE result.
<b>Endotoxin</b>	Less than 1EU per $\mu$ g by the LAL method.
<b>Purity</b>	> 95% as determined by Bis-Tris PAGE > 95% as determined by HPLC

## Formulation and Storage

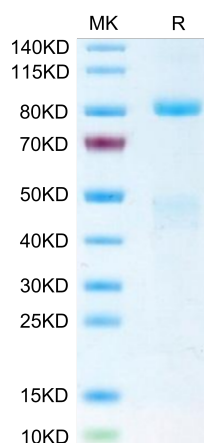
<b>Formulation</b>	Lyophilized from 0.22 $\mu$ m filtered solution in PBS (pH 7.4). Normally 8% trehalose is added as protectant before lyophilization.
<b>Reconstitution</b>	Centrifuge the tube before opening. Reconstituting to a concentration more than 100 $\mu$ g/ml is recommended. Dissolve the lyophilized protein in distilled water.
<b>Storage</b>	-20 to -80°C for 12 months as supplied from date of receipt. -80°C for 3 months after reconstitution. Recommend to aliquot the protein into smaller quantities for optimal storage. Please minimize freeze-thaw cycles.

## Background

c-Met, also called tyrosine-protein kinase Met or hepatocyte growth factor receptor (HGF R), is a protein that in humans is encoded by the MET gene. The protein possesses tyrosine kinase activity. The primary single chain precursor protein is post-translationally cleaved to produce the alpha and beta subunits, which are disulfide linked to form the mature receptor. Following activation by ligand, interacts with the PI3-kinase subunit PIK3R1, PLCG1, SRC, GRB2, STAT3 or the adapter GAB1.

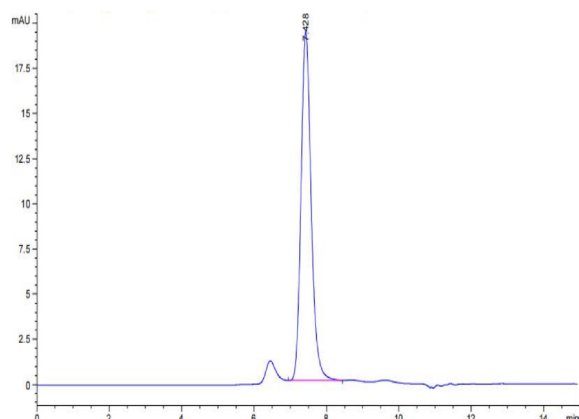
## Assay Data

### Bis-Tris PAGE



Biotinylated Human HGF R on Bis-Tris PAGE under reduced condition. The purity is greater than 95%.

### SEC-HPLC



The purity of Biotinylated Human HGF R is greater than 95% as determined by SEC-HPLC.

# Biotinylated Human HGF R/c-MET Protein

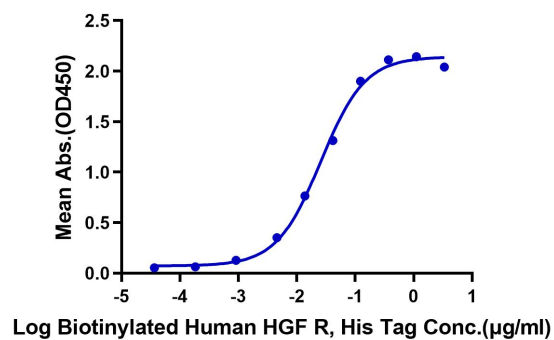
Cat. No. MET-HM401B

## Assay Data

### ELISA Data

#### Biotinylated Human HGF R, His Tag ELISA

0.05 $\mu$ g Anti-HGF R Antibody, hFc Tag Per Well



Immobilized Anti-HGF R Antibody, hFc Tag at 0.5 $\mu$ g/ml (100 $\mu$ l/Well) on the plate. Dose response curve for Biotinylated Human HGF R, His Tag with the EC50 of 25.7ng/ml determined by ELISA.